

The Area Guide to

HOMES

A PUBLICATION OF THE BUCKS COUNTY HERALD



BUCKS COUNTY
HERALD

April 22, 2021

Your guide to **Real Estate & Rentals,**
Home Improvement, Builders,
Furnishings & Landscaping

ALPHAGENESIS

ARCHITECT DESIGNER BUILDER

ALPHAGENESISDESIGN.COM

276.750.0452



Little's John Deere carries the new Z Track series of Zero Turn mowers

SEE HOW VALUABLE ZERO CAN BE. There are comfortable seats, storage for easy access to your gear, and smooth-riding rear drive tires. With our Accel Deep™ mower deck and up to 7 mph (11 km/h) forward ground speed, you can really see why the Z300 Series zero-turn mowers are at home in your

backyard. "Impressive" comes standard! GET MORE DONE WITH LESS EFFORT. Mow better, faster with the Z500 Series. It features mower decks in three cutting widths, three unique seats, and a 4.5-gallon (17 Liter) fuel tank to keep you going full speed ahead. Because when it comes to a great looking

lawn, nothing should slow you down. Cut & Sewn Comfortable Seats + LED Lighting for Low Light Conditions. Z700 SERIES ~ WHEN YOU WANT EVERYTHING FROM A ZERO-TURN MOWER. Perfect your lawn with ease using our heavy-duty zero-turn mowers. With 23-25 horsepower* and three different High-capacity PRO mower decks, the Z700 mowers guarantee you spend less time working on your property and more time relaxing in it. Strong Welded Frame, Large Fuel Tank, Fast Speed, Commercial Grade Engine, High Capacity PRO Mower Decks, (available in 48", 54", 60") Roll-Over Protective Bar (folds down to

fit in storage shed), Integrated Park Brake, Canopy Available, Rear Bumper, String Trimmer Rack WE ARE RIGHT WITH YOU ~ CALL "LITTLE'S" YOUR JOHN DEERE DEALER! Committed turf experts dig into what you need. Factory-trained service and parts professionals ensure that your equipment keeps working as hard as you do. So, let's get to work, together. For More Information visit www.relittle.com or visit our showrooms in Silverdale, Hatboro or Zieglerville, Pa.

Submitted by Robert E. Little Inc.



Run with Us ~ See the "Z track" series of Zero Turn Mowers (Z300, Z500, and Z700 Series)R



7 Models Under \$3499. USD ~ Bumper to Bumper Warranty

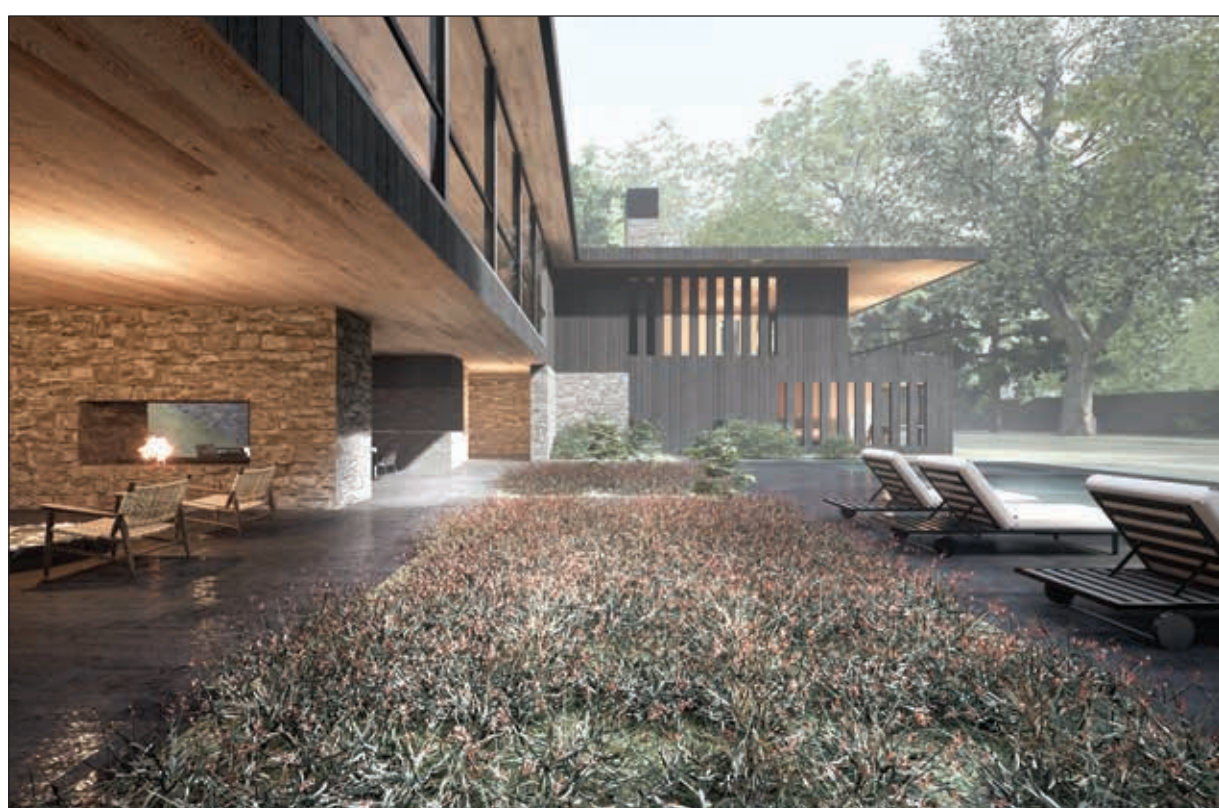
La Chaconne residence in honor of J.S. Bach

Looking at the future through a lens of the past and finding inspiration across mediums. La Chaconne, a 5,400 SF custom residence designed by Alpha Genesis Design Build, LLC, is a testament of modernist design with an obvious tip of the hat to great Architects and Designers such as Ludwig Mies van der Rohe and Eliot Noyes. Designed as a levitating pavilion, La Chaconne is intended to cast oneself into nature while maintaining a sense of security, warmth, and comfort.

The name La Chaconne derives from classical music, specifically baroque music by Johan Sebastian Bach. Bach's Partita in D Minor, BWV 1004, climaxes with its final movement titled, "Chaconne". A "Chaconne" is a seductive and moving dance popularized in the 1600's. Bach entrances the listener through 64 variations on a theme as he masterfully crafts his impassioned story. The residence "La Chaconne" is designed to be alluring and in honor of J.S. Bach has precisely 64 windows/doors framing Bucks County's varied and beautiful dreamscapes for the discerning owner.

The levitating great room is designed through a rigorous framework of steel and concrete all suspended from a centralized chimney that doubles as a structural concrete monument. The extended port a cochere is double wide and like the great room is designed with expanses of steel to achieve its elongated and streamline aesthetic. Outdoor living spaces are stacked directly below the levitating great room which provides shade and an unparallel space for entertaining. For more information visit, alphagenesistobuild.com.

Submitted by Alpha Genesis Design Build, LLC



FURNITURE STRIPPING • FURNITURE REPAIR
 FURNITURE FINISHING • RE-UPHOLSTERY
 FURNITURE REGLUEING
 CANING AND RUSH SEAT REPAIR/REPLACEMENT
 INSURANCE ESTIMATES
 COMMERCIAL CUSTOMERS WELCOME
 BUY AND SELL ANTIQUES AND COLLECTIBLES



246 WEST ASHLAND ST,
 DOYLESTOWN, PA 18901

HOURS: MON-FRI: 8-5, SAT: 9-2

WWW.BUCKSCOUNTYFURNITURERESTORATION.COM

PICK UP AND DELIVERY AVAILABLE



HISTORY

Elegant period details of a bygone era merge beautifully with today's modern conveniences in this stunning Second Empire Home. 3 bed/2½ baths. Lambertville, NJ. \$799,000.



ENCHANTING

'The Pines,' a pre-revolutionary home and delightful barn with apartment set on 10 bucolic acres. Renovated with modern comforts. 4 beds/2 baths. Delaware Township, NJ. \$669,000.



VIEW!

COMING SOON: Historically significant riverfront townhome boasts one of Lambertville's most inspiring water views. Open floor plan, interior stone wall from the c.1840 mill.

Lambertville, NJ 609.397.3007
 Flemington, NJ 908.751.7000
 New Hope, PA 215.321.3228



Real Estate Services in Bucks, Hunterdon, & Mercer Counties
www.RiverValleyInfo.com

DEERE SEASON

**RUN WITH A
Z300 SERIES ZTRAK™
ZERO-TURN MOWER
0% APR FOR 24
MONTHS¹**



Z300 SERIES ZTRAK™ MOWERS

- 20-25-hp* engines
- 42-, 48-, 54-in Accel Deep™ Mower Decks
- 2-year/120-hour bumper-to-bumper warranty**



Little's

www.relittle.com

**141 E Main Street
Silverdale, PA 18962
215-257-5177**

**335 SOUTH YORK ROAD
HATBORO, PA 19040
215-672-4100**

**Zieglerville Location
3 Little Road
Perkiomenville, PA 19492
610-287-9643**

¹Offer valid on purchases of new John Deere Z300 Series ZTrak Zero-Turn Mowers made between 02 March 2021 to 3 May 2021. Subject to approved credit on a Revolving Plan account, a service of John Deere Financial, f.s.b. For consumer use only. No down payment required. 0% APR is for 24 months only, regular Revolving Plan rates will apply after that. The regular Revolving Plan rate, which varies over time, is currently 18.25% APR. Available at participating U.S. dealers. Prices and models may vary by dealer. Offer available on new equipment and in the U.S. only. Prices and savings in U.S. dollars.

*The engine horsepower and torque information are provided by the engine manufacturer to be used for comparison purposes only. Actual operating horsepower and torque will be less. Refer to the engine manufacturer's website for additional information.

**Term limited to years or hours used, whichever comes first, and varies by model. See the LIMITED WARRANTY FOR NEW JOHN DEERE TURF AND UTILITY EQUIPMENT at JOHNDEERE.COM.

John Deere, the leaping deer symbol, and green and yellow trade dress are trademarks of Deere & Company.

Bucks County Furniture Restoration

New life for your furniture

Furniture, especially well-built furniture, is meant to stand the test of time. Not only is it beautiful, often offering expertly-interlocking, hand-carved wood, custom stitching, and artistic accents, but it serves a purpose in your home. Furniture provides rest when you need it, conversation with friends and a space to create what you love.

Why would you give that all up because its exterior looks a little worn?

At Bucks County Furniture Restoration, we provide a better alternative. Our local, family-owned company serves all the repair, restoration and furniture revitalization needs for our customers in Bucks, Montgomery and Hunterdon counties.

Our professionals work with all types of furniture pieces to give them a new look, new life and the former place that they held in your home.

Bucks County Furniture Restoration uses a mix of time-honored refinishing methods and the most modern technology to provide you with services our competitors can't match. We have experience and expertise in: stripping, reupholstery, glass bending, marble and metal polishing, furniture repair and finishing, refinishing, lamp and seat repair, conversions and knife sharpening.

We invite you to visit our showroom and take advantage of more than 30 years of professional experience and see our difference for yourself. Using our outstanding attention to detail, we can work with both new and antique items to give them a country feel that you will love.

Submitted by
Bucks County Furniture Restoration



Since 1976, J.R. Maxwell Builders has been serving Bucks County and the surrounding areas with exceptional residential and commercial building and design. Jay, his son James, and their team are classic custom craftsmen with an eye for every detail, committed to continuing their "Tradition of Excellence." Additionally, James' dual degree in construction management and operations management with a background in engineering adds a level of expertise to every job. Renovations, new constructions, interiors, exteriors and additions, including commercial renovations, historic renovations and restaurants are just some of the many projects in which we have extensive experience.

Our team consists of top-quality members who truly enjoy and care about their work. They take pride in each job, are respectful to homeowners, other contractors, and anyone else they come into contact with. The tradesmen on staff keep their work area organized throughout the building process so their job is done efficiently and correctly.

Whether your project is large or small, located in a town, city or rural area, or you need customized service, J.R. Maxwell Builders is up to the task. Our attention to detail doesn't stop when the building is done. We are always available to go over any details about your job, even after construction. J.R. Maxwell is a family-run custom building company, winner of multiple home building accolades, and our quality work cannot be matched.

Another facet of J.R. Maxwell Builders is Mink Run Millwork, a division of the business, which constructs high-quality custom millwork and cabinetry. Build your dream space with J.R. Maxwell Builders.

CONTACT US to get started on your custom project today:
215.345.1953 | jrmaxwellbuilders.com | minkrunmillwork.com

*Timeless, Classic Beauty
with a Modern Twist*



CUSTOM HOMES
ADDITIONS & RENOVATIONS
COMMERCIAL SERVICES
BUILT-IN CABINETS



*Tradition of Excellence
for Over 45 Years*

215.345.1953 | jrmaxwellbuilders.com

Follow Us on
Instagram & Facebook



MINK RUN MILLWORK
A Division of J.R. Maxwell Builders, Inc.
215.345.1953 | minkrunmillwork.com



Downsizing for Seniors is a BIG deal!! Your choice of a Realtor® can insure that your next move will go safely, securely and smoothly.

Nearly everyone wishes to age in place as they grow older. But too often, the spacious family house becomes too burdensome to maintain for individuals over 50, both financially and physically. It can entail a complex set of decisions relating to finances, ideal over 50 housing locations and property types, as well as anticipating future needs as you or your loved ones age.

Choosing the right woman for the job.

Making the appropriate over 50 living arrangement is challenging not only because it entails an emotional dimension, but also because of the complex issues you need to weigh, such as cost, location, services, amenities, activities, as well as current and future care needs.

Sue-Ann DiVito, a Senior Real Estate Specialist, will consult with you to review your current housing situation and outline the steps for your next move. She will provide you with pertinent information on 50+ housing trends, financing and market conditions.

Trying to determine your next step?

As a SRES® designee, Sue-Ann will develop a team of experts and advisors to help you while you're exploring your options and making your next move.

So what are you waiting for?

Take the next steps to a bright future and give Sue-Ann a call today. Together we'll find the very best place to call home.



Sue-Ann DiVito SRES®
Associate Broker - PA

215-234-7645 - office
267-221-6346 - cell

sueanndivito@gmail.com
www.yourbuckscountyhome.com

Selling Homes—Strengthening Communities

For those who call Central Bucks home...



Flo Smerconish

Flo Smerconish is your unparalleled real estate professional. And she offers the perfect pairing: Her encyclopedic knowledge of Central Bucks combined with Compass, a cutting-edge company building the first modern real estate platform.

It's the best of all worlds.

Flo Smerconish and Compass. An ageless pairing.

COMPASS



215.694.8500 mobile • 215.348.4848 office

54 W. State Street • Doylestown, PA

flo.smerconish@compass.com



Addison Wolfe Real Estate

A BOUTIQUE REAL ESTATE FIRM WITH GLOBAL CONNECTIONS

"Believe you can and you're halfway there."

- Theodore Roosevelt



HORTULUS FARM \$5,650,000

Comprising 100 acres down a 1/4 mile long, tree-lined drive, this classic 18th C. Bucks County farmstead boasts absolute privacy, 5 ponds, a waterfall, and 30 acres of "world-class" gardens. The property features a main stone farmhouse circa 1793 and two huge 19th C. dairy barns.



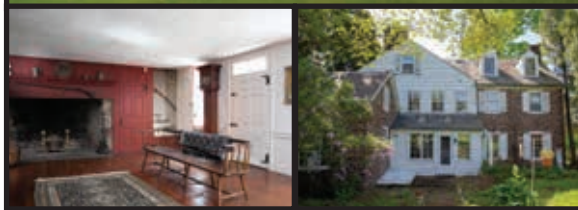
SUMMIT TRACE \$299,900

Beautifully updated end-unit townhouse in Summit Trace! Lovely open floorplan with easy access to private rear deck and back yard is perfect for indoor- outdoor living!
Greg Dwornikowski 215.534.7347



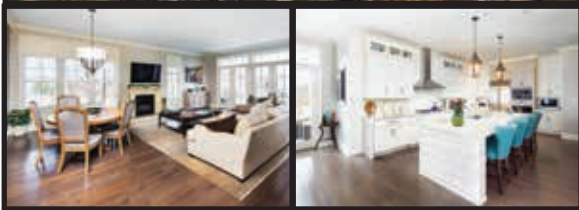
SOPHISTICATED COUNTRY \$1,875,000

Rare opportunity to own a new build in Solebury. This 3,700 sq ft home, sited on 2.1 acres, offers single floor living at its best. Features hardwood floors, gourmet kitchen w/ granite counters, custom cabinetry, and a large center island. Evan Walton 215.327.4709 or Art Mazzei 610.428.4885



DUANE FARM \$1,795,000

Sited at an elevated location amidst 67 fertile farmland acres. The Bedminster countryside moves in all directions and the open land provides ample opportunity for agrarian pursuits and/or a serious equestrian facility.
Sheila Buerkle, MBA 610.389.0775



THE RESIDENCES AT RABBIT RUN \$1,695,000

Walk to town and don't worry about parking. Includes high-end kitchen including Wolf appliances, custom closet built-ins, storage, custom cabinetry, private electronic elevator, stone patios, and a full house gas generator.
Nick Esser 646.745.5460



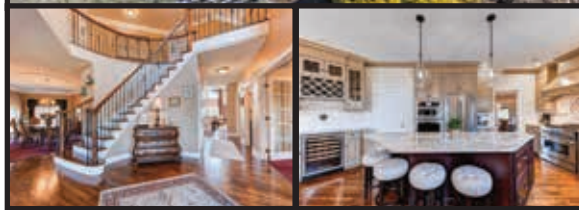
BUCKINGHAM GREEN \$1,435,000

One of the last large parcels of land (57 acres) is now on the market. The zoning is R-1 and the geological study permits septic mounds and spray irrigation. Located on Route 202 in Buckingham, just minutes from Doylestown Proper and 15 minutes to New Hope. Explore the possibilities.



CANAL-SIDE COLONIAL \$699,900

New construction opportunity in Palisades school district. Sited on a canal front, 2 acre lot in the quaint borough of Riegelsville. Walking distance to restaurants, and the Delaware river. Call for details and floor plans.
Megan Waits 215.264.9144



RIVER CROSSING \$1,175,000

Beautiful 4BR, 4.5 bath estate home, approximately 6550 finished square feet on a 1.36 acre manicured lot just a few minutes outside of New Hope Borough and equidistant to NYC and Phila.
Jay Ginsberg 215.431.1199



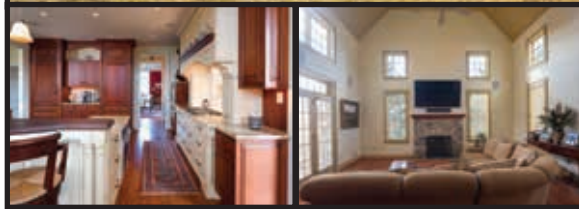
MORGAN CREEK \$360,000

STUNNING, SPACIOUS, and LUXURIOUS! First floor Bedroom Suite in a Parklike setting with waterfront views and walking trails. Close to shopping and amenities. 55+ Adult Community. Richland Township.
Norm Troxel 215.801.6100



STONEY HILL \$2,500/MO

One bedroom guest house on Stoney Hill Road. Just a short walk from downtown New Hope. Private guest house with attached 1 car garage. High end finished throughout.
Nick Esser 646.745.5460



FRENCH COUNTRY HOLLOW \$1,550,000

With a well executed design and superior craftsmanship this custom built French Country style home, by premium builder John Arrow, is located on a private cul-de-sac surrounded by Lookaway Golf Club.
Laurie Madaus 203.948.5157



LOGAN SQUARE \$370,000

In this commercial hub is a 1,357 square foot retail space perfectly designed for an office space, mortgage company, wealth management office, insurance or a myriad of other commercial uses.
Michaelangelo Greco 215.470.1983

For additional information or a private tour contact the listing agent directly
550 Union Square, New Hope, PA 18938 • 215.862.5500